

# Data Sheet

**TSM-160D**  
**TSM-165D**  
**TSM-170D**  
**TSM-175D**  
**TSM-180D**  
**TSM-185D**

Version\_Oct\_31\_2006

# TSM-160D

## Specifications and Dimensions

### 1. Electrical Specification

Maximum Power(Pm): 160W  $\pm$  5%

### 2. Typical Data at Standard Test Condition (T=25°C AM=1.5 E=1000W/m<sup>2</sup>)

NO.	TYPE		TSM-160D
1	Peak Power (Pm)		160W
2	Open Circuit Voltage (Voc)		42.8V
3	Short Circuit Current (Isc)		5.15A
4	Maximum Power Voltage (Vmp)		34.9V
5	Maximum Power Current (Imp)		4.60A
6	Maximum System Voltage		700V
7	Working Temperature		-40°C -90°C
8	Dimension (AxBxC)		1581x809x40mm
9	Cell Type		Monocrystalline
10	Quantity and Dimension of Cell		72pcs 125x125mm
11	Glass Type and Thickness		Tempered 3.2mm
12	Installation Hole	D1	948mm
		D2	474mm
		Diameter of the hole	Φ 9mm
13	Weight		15.6kg
14	3 By-pass diode		24 pieces cell parallel connection one diode

# TSM-165D

## Specifications and Dimensions

### 1. Electrical Specification

Maximum Power(Pm): 165W ± 5%

### 2. Typical Data at Standard Test Condition (T=25°C AM=1.5 E=1000W/m<sup>2</sup>)

NO.	TYPE	TSM-165D
1	Peak Power (Pm)	165W
2	Open Circuit Voltage (Voc)	43.2V
3	Short Circuit Current (Isc)	5.20A
4	Maximum Power Voltage (Vmp)	35.6V
5	Maximum Power Current (Imp)	4.65A
6	Maximum System Voltage	700V
7	Working Temperature	-40°C-90°C
8	Dimension (AxBxC)	1581x809x40mm
9	Cell Type	Mono-crystalline
10	Quantity and Dimension of Cell	72pcs 125x125mm
11	Glass Type and Thickness	Tempered 3.2mm
12	Installation Hole	948mm
		D2 474mm
		Diameter of the hole Φ9mm
13	Weight	15.6kg
14	3 By-pass diode	24 pieces cell parallel connection one diode

# TSM-170D

## Specifications and Dimensions

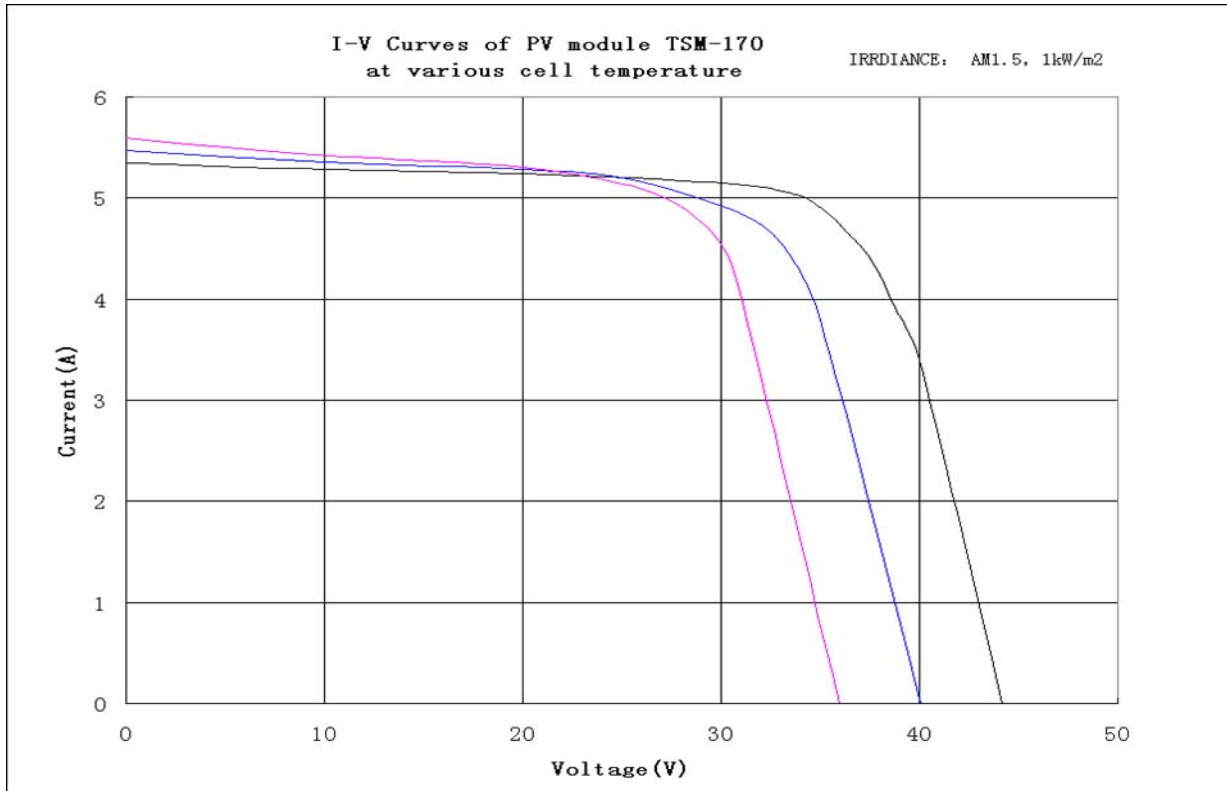
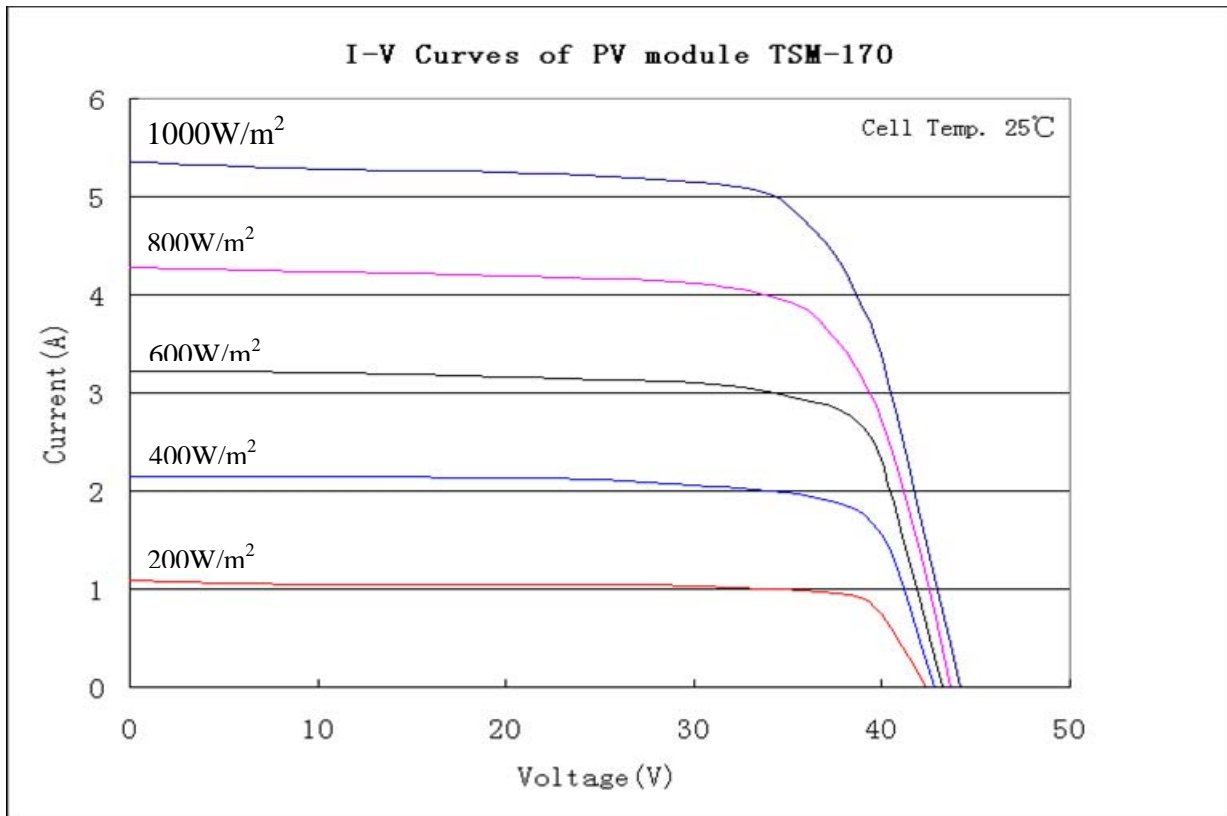
### 1. Electrical Specification

Maximum Power(Pm): 170W ± 5%

### 2. Typical Data at Standard Test Condition (T=25°C AM=1.5 E=1000W/m<sup>2</sup>)

NO.	TYPE		TSM-170D
1	Peak Power (Pm)		170W
2	Open Circuit Voltage (Voc)		43.60V
3	Short Circuit Current (Isc)		5.25A
4	Maximum Power Voltage (Vmp)		35.80 V
5	Maximum Power Current (Imp)		4.76A
6	Maximum System Voltage		700V
7	Working Temperature		-40°C -90°C
8	Dimension		1581x809x40mm
9	Cell Type		Monocrystalline
10	Quantity and Dimension of Cell		72pcs 125x125mm
11	Glass Type and Thickness		Tempered 3.2mm
12	Installation Hole		948mm
		Diameter of the hole	Φ9mm
13	Weight		15.6kg
14	3 By-pass diode		24 pieces cell parallel connection one diode

# PV Module



# TSM-175D

## Specifications and Dimensions

### 1. Electrical Specification

Maximum Power(Pm): 175W ± 5%

### 2. Typical Data at Standard Test Condition (T=25°C AM=1.5 E=1000W/m<sup>2</sup>)

NO.	TYPE		TSM-175D
1	Peak Power (Pm)		175W
2	Open Circuit Voltage (Voc)		43.90V
3	Short Circuit Current (Isc)		5.30A
4	Maximum Power Voltage (Vmp)		36.2V
5	Maximum Power Current (Imp)		4.85A
6	Maximum System Voltage		700V
7	Working Temperature		-40°C -90°C
8	Dimension(AxBxC)		1581x809x40mm
9	Cell Type		Monocrystalline
10	Quantity and Dimension of Cell		72pcs 125x125mm
11	Glass Type and Thickness		Tempered 3.2mm
12	Installation Hole		948mm
		D2	474mm
		Diameter of the hole	Φ9mm
13	Weight		15.6kg
14	3 By-pass diode		24 pieces cell parallel connection one diode

# TSM-180D

## Specifications and Dimensions

### 1. Electrical Specification

Maximum Power(Pm): 180W ± 5%

### 2. Typical Data at Standard Test Condition(T=25°C AM=1.5 E=1000W/m<sup>2</sup>)

NO.	TYPE	TSM-180D
1	Peak Power (Pm)	180W
2	Open Circuit Voltage (Voc)	44.20V
3	Short Circuit Current (Isc)	5.35A
4	Maximum Power Voltage (Vmp)	36.80V
5	Maximum Power Current (Imp)	4.90A
6	Maximum System Voltage	700V
7	Working Temperature	-40°C-90°C
8	Dimension(AxBxC)	1573x824x40mm
9	Cell Type	Monocrystalline
10	Quantity and Dimension of Cell	72pcs 125x125mm
11	Glass Type and Thickness	Tempered 3.2mm
12	Installation Hole	941mm
		D2
		Diameter of the hole
13	Weight	15.6kg
14	3 By-pass diode	24 pieces cell parallel connection one diode

# TSM-185D

## Specifications and Dimensions

### 1. Electrical Specification

Maximum Power(Pm): 185W ± 5%

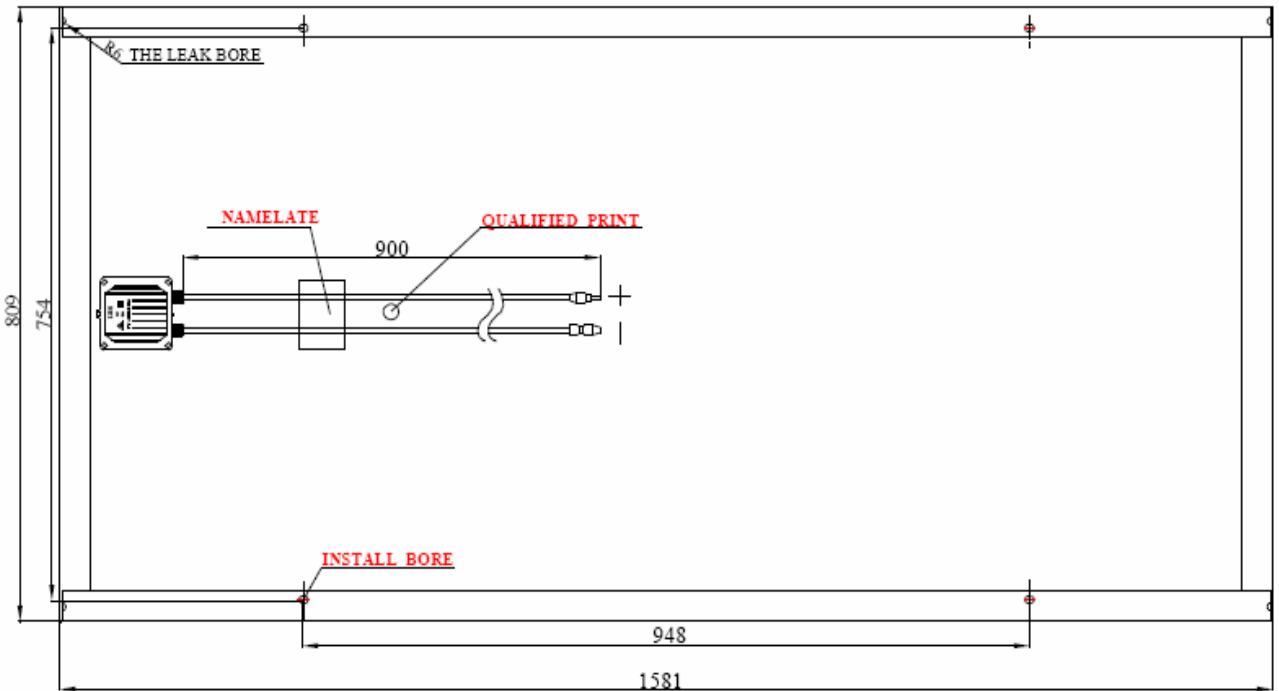
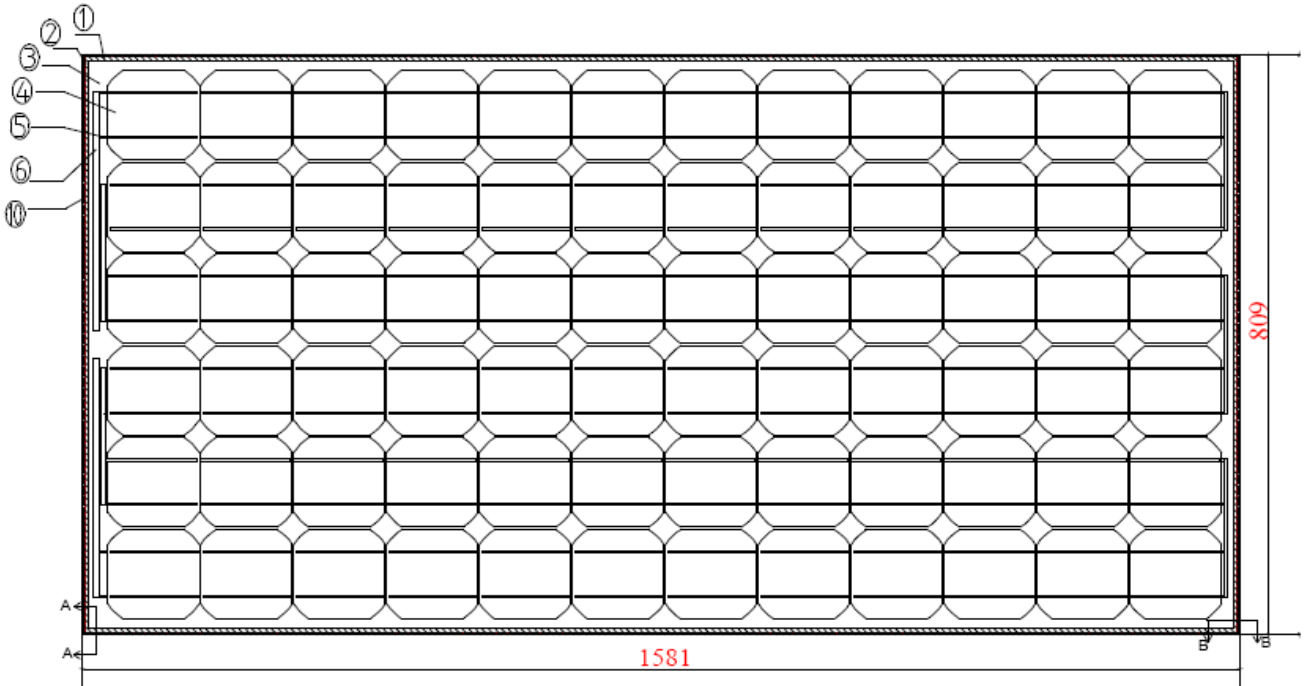
### 2. Typical Data at Standard Test Condition(T=25°C AM=1.5 E=1000W/m<sup>2</sup>)

NO.	TYPE	TSM-185D
1	Peak Power (Pm)	185W
2	Open Circuit Voltage (Voc)	44.50V
3	Short Circuit Current (Isc)	5.40A
4	Maximum Power Voltage (Vmp)	37.50V
5	Maximum Power Current (Imp)	4.95A
6	Maximum System Voltage	700V
7	Working Temperature	-40°C -90°C
8	Dimension(AxBxC)	1581x809x40mm
9	Cell Type	Monocrystalline
10	Quantity and Dimension of Cell	72pcs 125x125mm
11	Glass Type and Thickness	Tempered 3.2mm
12	Installation Hole	948mm
		D2
		Diameter of the hole
13	Weight	15.6kg
14	3 By-pass diode	24 pieces cell parallel connection one diode

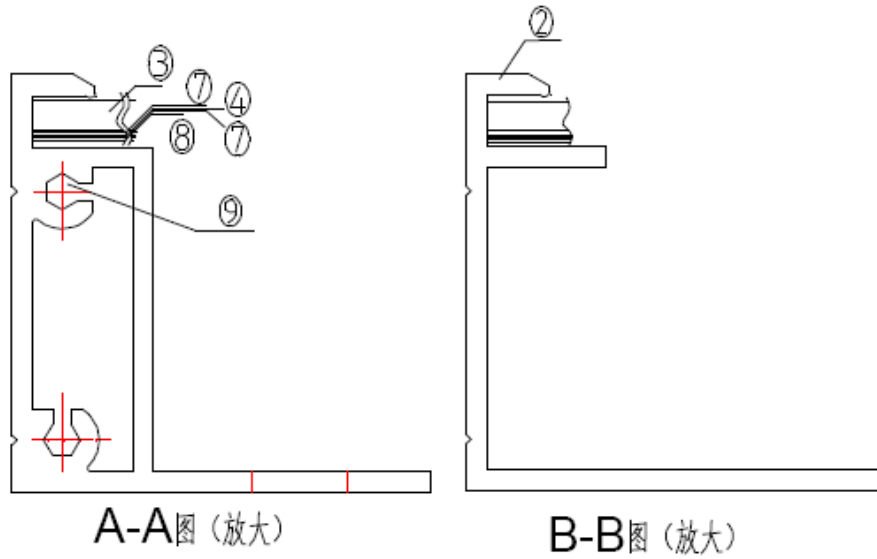


# PV Module

## 3. Module Drawing



# PV Module



No	Material		序号	名称
①	Long aluminum frame		⑥	Bus-bar
②	Short aluminum frame		⑦	EVA
③	glass		⑧	TPT
④	Cells(6*12=72pcs)		⑨	Bolt
⑤	Tin-coated Copper Ribbon		⑩	Silicon adhesive



# PV Module

## 4. Packaging

